

العلوم الأساسية	القسم Department	السنة التحضيرية	الكلية College
التوقيع Signature	2016-5-15	التاريخ Date	اليوم Day
...../د.D\	الاسم Nam e	لجنة التدقيق Editing Committee	أستاذ المقرر Instructor
...../د.....D\	الاسم Nam e		التوقيع Signature

...../1437.../1438... اختبار الفصل الدراسي... الثاني... للعام الجامعي

Final EXAM : Semester 1 1437 /1438

Student Information / معلومات الطالب			
اسم الطالب/Student Name		ID الرقم الجامعي	
معلومات المقرر			
BIOLOGY علم الاحياء العام - Course Title مسعى المقرر		106 Course Code رقم المقرر ورمزه	
معلومات الاختبار			
Section Number رقم الشعبة			
Exam Period فترة الإختبار		Exam Duration ساعاتين زمن الإختبار	
Exam Mark 15 الدرجة الكلية		Pages يتكون الاختبار من عدد	
Paper 10 ورقة			
توزيع الدرجات			
السؤال Question	Full mark العظمى	درجة الطالب Student Mark	
1	15		الأول
2	15		الثاني
3	10		الثالث
-	40		مجموع درجات الأسئلة Questions Total
-			مجموع درجات الأعمال الفصلية Course Work
-			المجموع الكلي/مائة درجة Course Total
Written(...../كتابة).....			
<p>بعض تعليمات الاختبار</p> <p>عزيزي الطالب , عزيزتي الطالبة /</p> <p>حرصا على أدائك الاختبار بشكل نظامي يجدر بك العناية بالاتي :</p> <ul style="list-style-type: none"> الكتابة تكون بالقلم الأزرق فقط. الغش أو الشروع فيه أو الاخلال بنظام الاختبارات , يعرضك للجزاء المنصوص عليه فيلائحة تأديب الطلاب. يمنع نهائياً إحضار الهاتف الجوال في قاعة الاختبار ومن يضبط معه هاتف الجوال سوف تسحبورقته ويحرق له محضر محاولة غش . على كل طالب/ة إحضار أدواته الخاصة حيث أنه لا يسمح بتبادل الأدوات بين الطلبة. يمنع الخروج من الاختبار قبل مضي نصف ساعة من بداية الاختبار, ولا يحق للطلاب المتأخر أكثر من نصف ساعة دخول الاختبار. 			

Part [1](Questions from 1-20) (15 marks)

Write True (T) in the front of correct statements and false (F) in wrong statement.

1. Purines includes nitrogenous basis named Adenine(A) and Guanine(G)	
2. Homeostasis is controlled by both conscious and unconscious responses	
3. Enzymes speed up metabolic reactions by lowering energy barriers	
4. Reversible inhibitors bind loosely to the enzyme.	
5. G2 Phase includes DNA replication and copying.	
6. Cofactors are organic enzyme conjugates.	
7. Mutations are a major source of genetic variation in a population increasing biodiversity.	
8. Zygote contains a diploid chromosomal number.	
9. The GI tract composed only from two layers; mucosa and serosa	
10. All pancreatic juices secreted only in large intestine	
11. veins are blood vessels on the output (ventricular) side of the hear	
12. Plasma with type B blood contains an anti-B agglutinin that will clump type B blood	
13. Schwann cells that produce myelin sheath around nerve fibers in the central nervous system	

14. Motor neurons carry instruction to the body	
15. The cerebellum Maintains muscle tone, posture and balance	
16. The brain stem does not Regulates the heart rate, breathing, and blood pressure	
17. When blood glucose levels are lowered stimulate the production and secretion of insulin	
18. Endocrine glands secrete hormones directly into the bloodstream	
19. Type II diabetes called “adult-onset diabetes” because it appears during adulthood	
20. Gigantism is the secretion of excess growth hormone after the closure of the epiphyseal plates, when further increase in height is impossible	

Part (2) choose the best answer (Questions from 21-40). (15 marks)

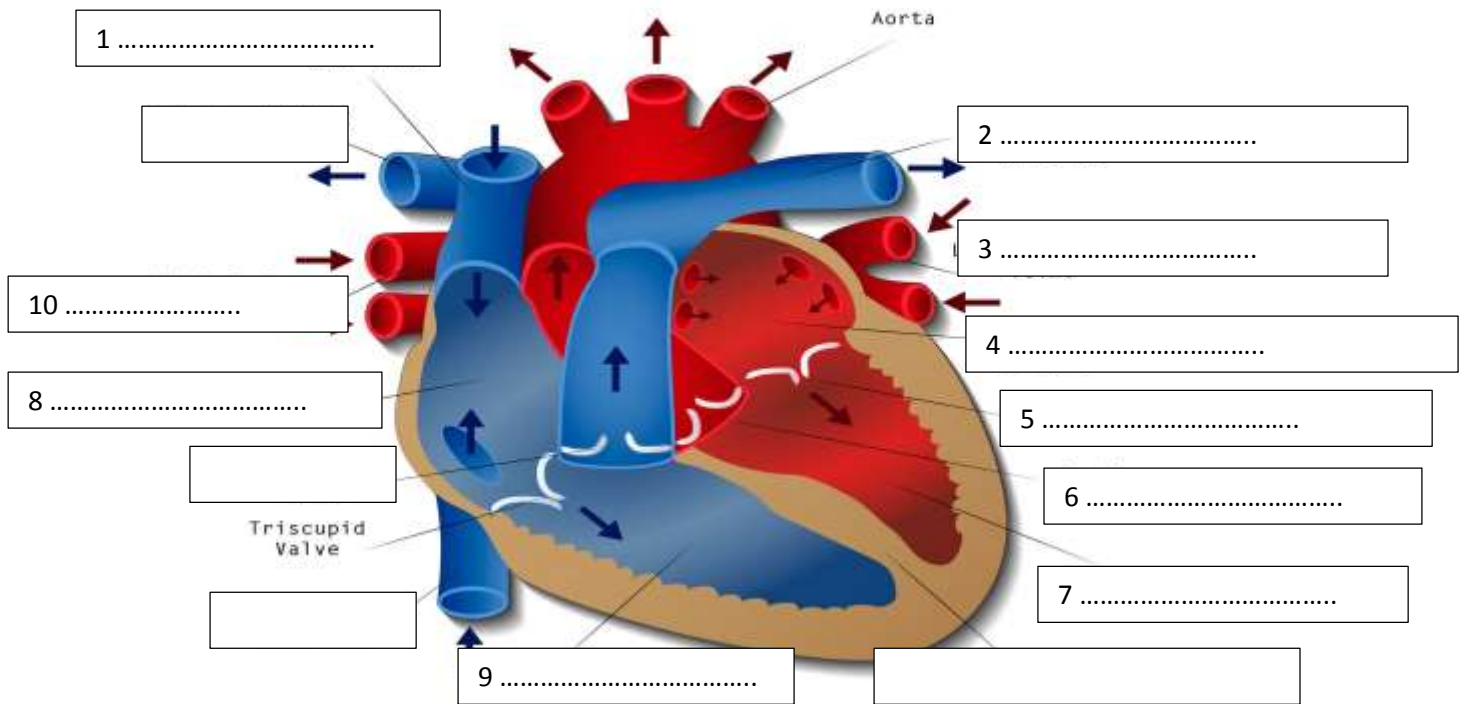
21. Hormones secreted by the intestines is :	
a. Calcitriol, Erythropoietin and Renin	b. Thyroxin (T3), PTH and melatonin
c. PTH and melatonin	d. Gastrin, Cholecystokininand Secretin
22. Hormones secreted by the kidney	
a. Calcitriol, Erythropoietin and Renin	b. Thyroxin (T3) & Thyroxin (T4)
c. PTH and melatonin	d. Thyroxin (T3), PTH and melatonin
23. The Thyroid Gland – Hormones is :	
a. (T3) & (T4)	b. PTH
c. Melatonin	d. Insulin and PTH
24. Specifically, hormones:	
a. Maintain fluid balance	b. Assist in tissue repair
c. Maintain basal metabolic rate	d. All mention is correct
25. Steroid hormone :	
a. lipid-soluble	b. Not lipid- soluble
c. a and b is correct	d. Water-soluble
26. the Meninges are composed from three layers:	
a. Dura, Arachnoid and pia maters.	b. Epicardium, myocardium and endocardium
c. Endothellium, smooth muscules and connective tissues	d. None of the above

27. The brain has 4 main parts:	
a. The pericardium, myocardium, endocardium and epicardium	b. The two atria and two ventricles
c. The brain stem, the cerebellum, the diencephalon and the cerebrum	d. all of the above
28. The classes of neurons are based on its function includes:	
a-Motor neurons	b-interneuron
c-sensory neurons	d. all of above
29. anemia symptoms includes :	
a. fatigue	b. Weakness
c. Shortness of breath	d. All of the above
30. The blood Buffy coat composed of :	
a. Plasma	b. Packed RBCs
c.WBCs and Platelets	d. All of above
31. The Bone marrow stem cells produces :	
a. T. Lymphocytes	b. B. Lymphocytes
c. Platelets & RBCs	d. All of the above
32. Serious complications of Atherosclerosis are	
a. Thrombus	b. Embolism
c. elevated blood pressure	d. all of the above
33. The right and left sides of the heart are separated or divided by :	
a. Valve	b. Septum
c. Nerve	d. Membrane
34. In mitosis phase, the nuclear envelope fragments in.....	
a. Prophase	b. Telophase
c. Metaphase	d. All of the above
35. -The cell division in prokaryotic cells is called	
a. Cell Cycle	b. Binary fission

c. Mitosis	d. Meiosis
36. In human the diploid number of chromosome is.....	
a. 23	b.46
c.64	d. 32
37. During which of the following process a new copy of a DNA molecule is precisely synthesized?	
a. Transcription	b. Transformation
c. Translation	d .Replication
38. Pre-mature mRNA changed to mature mRNA by	
a. adding a protective cap	b. adding a poly A's tail
c. remove introns	d. all of the above
39. The complementary RNA strand for DNA 5`CATATG-3` sequence is:	
a. DNA 3` -GTATAC- 5`	b. DNA 5` -GTATAC- 3`
c. RNA 3` -GUAUAC-5`	d. RNA 5` -GUAUAC- 3`
40. the muscle of the heart which contracts to create heartbeats named:	
a. Epicardium	b. Pericardium
c. Myocardium	d. Endocardium

Part (3) Use the word from the following word bank and label the parts of the heart. (1-10)(10 marks)

Diagram of human heart



- | | | | |
|-----------------------|------------------------|------------------------------|-------------------------|
| superior vena cava | inferior vena cava | tricuspid valve | bicusped (Mitral) valve |
| left pulmonary artery | right pulmonary artery | left atrium - left ventricle | right pulmonary vein |
| left pulmonary vein) | Right ventricle | right atrium | |

End Good Luck